

30, 40, 70 Amp

# AC Level 2 Charging Station

Space-Saving and Cost-Effective Choice Single or Dual Port Options



AC-Level 2 product family is certified according to the California Type Evaluation Program (CTEP, Cert-#: 5890-21). It is the only EVSE that supports authentication via RFID or Credit Card, mobile payment methods like QR-Code or app. Our systems also allow for Multi-tiered energy pricing (time-of-use tariffs) and multi-tiered parking pricing for currents up to 70A, which allows ultimate freedom in choosing the right pricing strategy for each use case. Our AC Level 2 EVSE come fully calibrated, tested and sealed, ready for installation for commercial purposes (certain RSA activities may need to be performed).

## KEY FEATURES

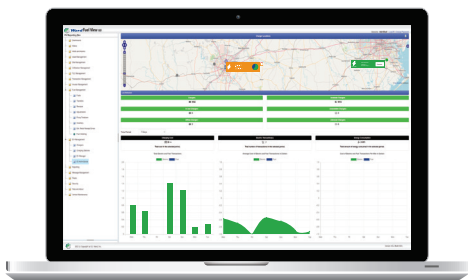
- Dual Ports Rate for 30 / 40 Amps (each)
- SA J1772 Charging Protocol
- NEMA 3R Housing
- 7" Color LCD Screen
- RFID, Credit Card

## Standard Features

- Charging Protocol: Saej1772
- Nema 3R Housing
- RFID Reader
- OCPP Compliant
- 7" Color Screen
- UI Compliant - ETL Certified

## Options

- Single Or Dual Port
- Pedestal or Wall Mount
- Cable Retractor
- Credit Card Reader
- Credit Card Scanner
- HB44 Meter



Ward FCTs and Fuel View software are compatible with EV chargers for controlling access and tracking charger locations usage.

 See the Ward Capabilities Brochure for more product offerings.

# Specifications

POWER PER PORT	7.2 kW (240VAC @ 30A)	9.6 kW (240VAC @ 40A)	16.8 kW (240 VAC @ 70A)
SINGLE PORT MODEL - PEDESTAL	L2P-30-240-16	L2P-40-240-16	L2P-70-240-16
SINGLE PORT MODEL - WALL	L2W-30-240-16	L2W-40-240-16	L2W-70-240-16
DUAL PORT MODEL - PEDESTAL	L2P-30-240-15	L2P-40-240-15	
DUAL PORT MODEL - WALL	L2W-30-240-15	L2W-40-240-15	

## Electrical Service

Power	240/208 VAC @ 30, 40, or 70A Circuit Per Port	
Service Wiring	Single: 3-Wire (L1, L2, Earth Ground)	Dual: 5-wire (L1, L1, L2, L2, Earth Ground)

## Functional Interfaces

Connector Type	SAE J1772
Charging Protocol	SAF11772
Standard Cable Length	25 ft
Cable Retractor	Optional (Cable 18 ft w/ Cable Management)
LCD Display	500 Nits, 7" Color, 800 x 480, UV Protected
Card Reader	ISO 14443 Type A & B, ISO 18092 NFC


## Safety and Connectivity

Ground Fault Detection	20 mA
Plug-Out Detection	SAE J1772
Power Measurement (opt)	Accuracy: 1% - 5%
Power Report Interval	Every 15 minutes on the hour
Wireless	2.4 GHz Wi-Fi (802.11 b/g/n)
Wide Area Network	4G Modem
Communication Protocols	OCP 1.5 and 1.6 Compliant



## Safety and Operation

Enclosure Rating	NEMA 3R
Regulatory Compliance	ET Certified for USA and cUL Certified for Canada; Complies with UL 2594, UL 2231-1, UL 2231-2, and NEC Article 625, EMC: FCC Part 15 Class A
Operating Temperature	-30°C to +60°C (-22°F to 140°F)
Storage Temperature	-50°C to +80°C (-58°F to 176°F)
Humidity	95% Non-Condensing

 Contact a SimplyFuel Solutions consultant for the options that best fit your fleet's needs.

## Contact

[ejward.com/contact/](http://ejward.com/contact/)

**SimplyFuel Solutions®**  
an E.J. Ward, Inc. company